

# BPW code number designations

Type designation, code number designation  
for BPW Trailer axles and suspensions





BPW-Sachnr. 39841501e

**BPW is a globally leading manufacturer of intelligent running gear systems for trailers and semi-trailers. As an international mobility and system partner, we offer a wide range of solutions for the transport industry from a single source, from axle to suspension and brake to user-friendly telematics applications.**

**We thereby ensure outstanding transparency in loading and transport processes and facilitate efficient fleet management. Today, the well-established brand represents an international corporation with a wide product and service portfolio for the commercial vehicle industry. Offering running gear systems, telematics, lighting systems, composite solutions and trailer superstructures, BPW is the right system partner for automotive manufacturers.**

**BPW, the owner-operated company, consistently pursues one target: To always give you exactly the solution which will pay off. To this end, we focus our attention on uncompromising quality for high reliability and service life, weight and time-saving concepts for low operating and maintenance costs as well as personal customer service and a close-knit service network for quick and direct support. You can be sure that with your international mobility partner BPW, you always use the most efficient method.**

# Your partner on the path to economic viability



**BPW Bergische Achsen Kommanditgesellschaft**

Postbox 12 80 · 51656 Wiehl, Germany · Phone +49 (0) 2262 78-0  
info@bpw.de · [www.bpw.de](http://www.bpw.de)

# BPW Type and code number designations

## Table of contents

◎ 1.	<b>BPW Type and code number designations.....</b>	<b>Page 2 - 3</b>
1.1	Type plate	Page 3
◎ 2.	<b>Explanation of BPW axle type codes .....</b>	<b>Page 4 - 9</b>
2.1	Trailer axles / Steering axles	Page 4 + 5
2.2	Air suspensions	Page 6 + 7
2.3	Mechanical suspensions	Page 8 + 9
◎ 3.	<b>Explanation of BPW code numbers .....</b>	<b>Page 10 - 14</b>
3.1	Trailer axles and suspensions	Page 10 - 14

Valid: **1.4.2015**

This list explains the BPW type designations and the BPW code number system for BPW trailer axles, steering axles and axle suspensions.

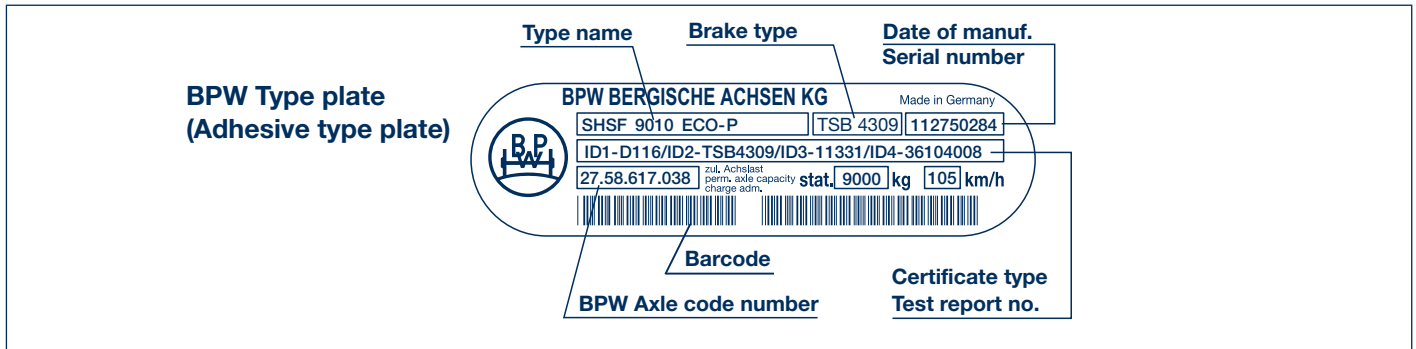
Current versions and additional informations can be found online at [www.bpw.de](http://www.bpw.de).

Subject to change (without notice).

---

# BPW Type and code number designations 1

## BPW Type plate 1.1



BPW Type designations	Example:
The BPW type name is composed of a letter group and a number group.	<b>SHSF 9010 ECO-P</b>
The letter group identifies the type of axle and suspension version as well as defining the hub version.	<b>SHSF</b> - BPW axle series <b>SH</b> for single wheels (without offset), wheel studs M 22 x 1.5, <b>without</b> wheel nuts
The number group specifies the axle load on the ground in kilogrammes and the number of wheel studs per wheel hub (for disc wheel connection).	<b>9010</b> - <b>9000</b> kg axle load - <b>10</b> wheel studs per wheel
The group of letters at the end of the model name defines the type of hub bearing.	<b>ECO-P</b> - <b>ECO<sup>Plus</sup></b> bearing generation
You can view the brake certificate referenced by certificate type/test report number on the type plate by logging onto the BPW website at <a href="http://www.bpw.de">www.bpw.de</a> (Download Centre in the German version of the website - „Bremsgutachten“).	e.g. <b>D116/.../36104008</b> - <b>D116</b> Certificate type - <b>36104008</b> Test report no.

Further type plates:

### Riveted type plate

Exec. prior to 1981

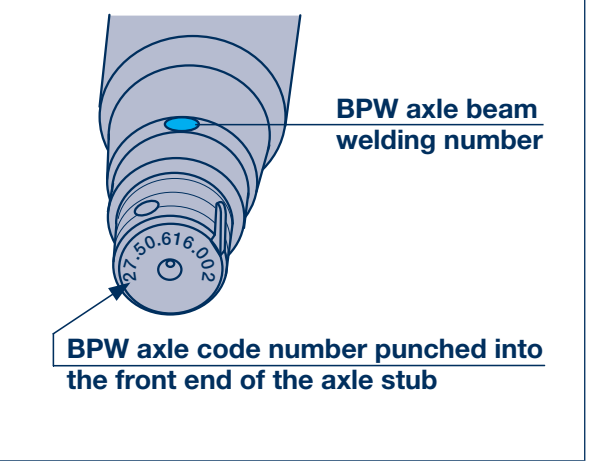
Exec. prior to 1999

### Adhesive type plate

Exec. prior to 2/2004

Exec. prior to 10/2006

The BPW axle code number is shown on the type plate.  
 If this is missing or no longer legible, the BPW axle number can be read off the front end of the axle stub in most cases.  
 In steering axles and ECO Plus 2 bearings, there is no code number embossed on the front end of the stub.



Where the axle beam welding number is indicated, the axle can also be identified. See also BPW Internet application for spare part lists for commercial vehicles.

## 2 Explanation of BPW axle type codes

### 2.1 Trailer axles / Steering axles (extract)

Example:										
H	S	F	A	H	LL	9010	12°	ECO Plus 2		
		Axle series		Axle beam		Brake		Tyre		Year of manuf.
E										
EH										- 1981
H								SN 420	20 - 24"	1982 -
R										1982 -
M										1982 -
KH										1988 -
KM								SN 360	19.5"	1985 -
KR										1985 -
KRD										1985 -
NH										1993 -
NR								SN 300	15/17.5"(12")	1982 -
NRD										1982 -
NM										1982 -
SH								SB 4345	20 - 24"	1996 - 2010
								SB 4309	22.5"	2003 - 2010
								TSB 4312	20 - 24"	2010 -
								TSB 4309	22.5"	2010 -
SKH								SB 3745	19.5"	1998 - 2010
								TSB 3709	19.5"	2010 -
SKM								SB 3745	19.5"	1998 - 2010
								TSB 3709	19.5"	2010 -
ZR										1967 - 1982
ZZ								SN 300	15/17.5"(12")	(- 1982)
<b>Wheel execution</b>										
B										for single wheels, wheels with offset
S										for single wheels, wheels without offset
Z										for twin wheels
I										Wheel spiders for Trilex wheel rims; single wheels
IZ										Wheel spiders for Trilex wheel rims; twin wheels
F										Wheel studs M 22x1.5 without wheel nuts; order wheel nuts for stud or spigot alignment separately
M										for spigot alignment / Alloy wheels

# Explanation of BPW axle type codes **2**

## Trailer axles / Steering axles (extract) **2.1**

Example:									
<b>H</b>	<b>S</b>	<b>F</b>	<b>A</b>	<b>H</b>	<b>LL</b>	<b>9010</b>	<b>12°</b>	<b>ECO Plus 2</b>	
			<b>A</b>						with alloy hub
				<b>(D)</b>					( German „Dauerbremse“ approval StVZO regulation 41 para 14 ) - 1990
				<b>H</b>					for hanging boosters
					<b>L</b>				Power steering axle      Steering angle max. 45°
					<b>LL</b>				Self steering axle, series <b>LL</b> Steering angle max. 27°
					<b>LS</b>				Self steering axle, series <b>LS</b> Steering angle max. 20°
					<b>P</b>				Swivel axle
					<b>ST</b>				Stub axle
						<b>6006 to 20010</b>			Axle load + quantity of wheel studs per hub
							<b>-15</b>		Axle beam-wall thickness, e.g. 15 mm
							<b>-1</b>		Type of hub bearing (e.g. 14t)
							<b>/3</b>		Wheel connection - 10 wheel studs, pitch circle 335 mm (only K..)
							<b>/12° to /40°</b>		Steering angle of steering axle
									<b>Hub bearing execution</b>
							<b>ECO</b>		BPW trailer axle with ECO Unit
							<b>ECO-MAXX</b>		Weight-optimized BPW trailer axle with ECO Unit
							<b>ECO<sup>Plus</sup></b>		Weight-optimized BPW trailer axle with ECO <sup>Plus</sup> Unit
							<b>ECO Plus 2</b>		Weight-optimized BPW trailer axle with ECO Plus 2 Unit, 2007 -
							<b>ECO Plus 3</b>		Weight-optimized BPW trailer axle with ECO Plus 3 Unit, 2015 -
							<b>MAXX</b>		Weight-optimized BPW trailer axle with conv. hub bearing system

## 2 Explanation of BPW suspension type codes

### 2.2 Air suspensions (extract)

Example:												
HSF	ALO	A	LL	3/	9010	/12°	E	F30	ECO Plus 2			
H..										see explanation of axle type codes page 4 / 5		
K..												
N..												
a.o.												
										<b>Air suspension series</b>	<b>Ride-height</b>	
O										O	straight overslung trailing arm	490 - 500
OM										OM	cranked overslung trailing arm	370 - 470
OMN										OMN	cranked overslung trailing arm	355
OMT										OMT	cranked underslung trailing arm	290
OT										OT	Underslung trailing arm	220 - 360
SLO										SLO	straight overslung trailing arm	420 - 490
SLM										SLM	cranked overslung trailing arm	360 - 440
SLU										SLU	Underslung trailing arm	220 - 330
ALO										ALO	straight overslung trailing arm	380 - 490
ALM										ALM	cranked overslung trailing arm	305 - 420
ALMT										ALMT	cranked overslung trailing arm	245 - 290
ALU										ALU	Underslung trailing arm	175 - 300
DLU										DLU	Air bags above trailing arm	260 - 330
ACAU										ACAU	ECO Air COMPACT	205 - 350
ACAM										ACAM		245 - 370
ACAO										ACAO		335 - 385
ACBU										ACBU		260 - 330
ACBM										ACBM		300 - 425
ACBO										ACBO		330 - 510
VO										VO	Two-fold bellows	
	A										with axle lift device	
	R										with frame (= ride hight + 100 mm)	
	U										with U-stabilizer	
		L									with power steering axle, series L	Steering angle max. 40°
		LL									with self steering axle, series LL	Steering angle max. 27°
		LS									with self steering axle, series LS	Steering angle max. 20°
			-								Single axle	
			2/								Tandem axle suspension	
			3/								Tri-axle suspension	
				6006 to 13010							Axle load + quantity of wheel studs per hub	
						/12° to /40°					Steering angle of steering axle	

# Explanation of BPW suspension type codes **2**

## Air suspensions (extract) **2.2**

Example:										
HSF	ALO	A	LL	3/	9010	/12°	E	F30	ECO Plus 2	
										<b>Execution hanger brackets</b>
<b>A</b>										Alloy hanger bracket
<b>C</b>										With C-beam
<b>D</b>										Hanger bracket with top plate
<b>E</b>										Hanger bracket without top plate
<b>K</b>										Bolt-on bracket
<b>S</b>										Taper mounted hanger brackets (70 mm wide)
<b>T</b>										with beam (draw axle)
<b>V</b>										Adjustable hanger bracket
<b>X</b>										Stainless steel hanger bracket
<b>Y</b>										Without mounted hanger brackets, hanger brackets separate
										<b>Air bag execution</b>
<b>30</b>										Air bag Ø 300 mm, for stroke 200 mm (normal)
<b>30-1</b>										Ø 300 mm, for stroke up to 340 mm
<b>30 K</b>										Ø 300 mm, for stroke 150 mm
<b>36</b>										Ø 360 mm, for stroke 200 mm (normal)
<b>36-1</b>										Ø 360 mm, for stroke up to 340 mm
<b>36-2</b>										Ø 360 mm, for stroke up to 450 mm
<b>36 K</b>										Ø 360 mm, for stroke 180 mm
<b>F30</b>										Ø 300 mm, central on the trailing arm
<b>G</b>										Air bag with split piston
<b>Z</b>										Air bags loose, separately
										<b>Hub bearing execution</b>
<b>ECO</b>										BPW trailer axle with ECO Unit, 1996 (1998) -
<b>ECO-MAXX</b>										Weight-optimized BPW trailer axle with ECO Unit, - 2003
<b>ECO<sup>Plus</sup></b>										Weight-optimized BPW trailer axle with ECO <sup>Plus</sup> Unit, 2003 -
<b>ECO Plus 2</b>										Weight-optimized BPW trailer axle with ECO Plus 2 Unit, 2007 -
<b>ECO Plus 3</b>										Weight-optimized BPW trailer axle with ECO Plus 3 Unit, 2015 -
<b>MAXX</b>										Weight-optimized BPW trailer axle with conv. hub bearing system



## 2 Explanation of BPW suspension type codes

### 2.3 Mechanical suspensions (extract)

Example:										
HSF	VB	U	LL	3/	9010	/12°	M	ECO Plus 2	ECO Cargo	
H..										
K..										
N..										see explanation of axle type codes page 4 / 5
a.o.										
										<b>Suspension series</b>
VA										<b>VA</b> Mechanical suspension with leaf springs mounted on movable bearings, with mechanical braking load compensation
VB										<b>VB</b> Mechanical suspension without braking load compensation, leaf springs above the axle
VBN										<b>VBN</b> Mechanical suspension without braking load compensation, leaf springs above the axle, low design
VBT										<b>VBT</b> As above, but leaf springs below the axle
VG										<b>VG</b> Mechanical suspension without braking load compensation, leaf springs above the axle, with cast supports
VGT										<b>VGT</b> As above, but leaf springs below the axle
VK										<b>VK</b> Mechanical suspension with mechanical braking load compensation via torque arm arrangement on the equalizer, leaf springs above the axle
VKT										<b>VKT</b> As above, but leaf springs below the axle
VH										<b>VH</b> Suspension with hydraulic braking load compensation and optional auxiliary pneumatic springs, leaf springs above the axle.
VHT										<b>VHT</b> As above, but leaf springs below the axle
VN										<b>VN</b> Mechanical suspension with mechanical braking load compensation via pull rods
SS										<b>SS</b> Schmitz self-tracking suspension system
W										<b>W</b> Tandem axle assembly, rigid, with two-leaf springs and support axle, bearing blocks between the leaf springs
BW										<b>BW</b> Tandem axle assembly, rigid, with two-leaf springs and support axle, bearing blocks above the leaf springs, with bronze bushes
GW										<b>GW</b> Tandem axle assembly, rigid, with two-leaf springs and support axle, bearing blocks above the leaf springs, with rubber bushes
U										with U-stabilizer
Q										with rectangular section stabilizer
L										with power steering axle, series <b>L</b> Steering angle max. 40°
LL										with self steering axle, series <b>LL</b> Steering angle max. 27°
LS										with self steering axle, series <b>LS</b> Steering angle max. 20°
-										Single axle
2/										Tandem axle suspension
3/										Tri-axle suspension
6006 to 20010										Axle load + quantity of wheel studs per hub
/12° to /40°										Steering angle of steering axle

# Explanation of BPW suspension type codes **2**

## Mechanical suspensions (extract) **2.3**

Example:										
HSF	VB	U	LL	3/	9010	/12°	M	ECO Plus 2	ECO Cargo	
									<b>Exec. index</b>	
							<b>B</b>		<b>B</b>	reinforced
							<b>BE</b>		<b>BE</b>	reinforced, equalizer bearing with bronze bushes
							<b>C</b>		<b>C</b>	
							<b>HD</b>		<b>HD</b>	Heavy-Duty-execution
							<b>HDE</b>		<b>HDE</b>	Heavy-Duty-execution, equalizer bearing with bronze bushes
							<b>E</b>		<b>E</b>	Equalizer bearing with bronze bushes
							<b>K</b>		<b>K</b>	
							<b>KE</b>		<b>KE</b>	Equalizer bearing with bronze bushes
							<b>KN</b>		<b>KN</b>	low design
							<b>L</b>		<b>L</b>	reinforced
							<b>LE</b>		<b>LE</b>	reinforced, equalizer bearing with bronze bushes
							<b>M</b>		<b>M</b>	reinforced
							<b>ME</b>		<b>ME</b>	reinforced, equalizer bearing with bronze bushes
							<b>MN</b>		<b>MN</b>	reinforced, low design
							<b>MNE</b>		<b>MNE</b>	reinforced, low design equalizer bearing with bronze bushes
									<b>Hub bearing execution</b>	
							<b>ECO</b>		BPW trailer axle with ECO Unit, 1996 (1998) -	
							<b>ECO-MAXX</b>		Weight-optimized BPW trailer axle with ECO Unit, - 2003	
							<b>ECO<sup>Plus</sup></b>		Weight-optimized BPW trailer axle with ECO <sup>Plus</sup> Unit, 2003 -	
							<b>ECO Plus 2</b>		Weight-optimized BPW trailer axle with ECO Plus 2 Unit, 2007 -	
							<b>ECO Plus 3</b>		Weight-optimized BPW trailer axle with ECO Plus 3 Unit, 2015 -	
							<b>MAXX</b>		Weight-optimized BPW trailer axle with conv. hub bearing system	
							<b>ECO Cargo</b>		Running gear system as from 2013	

# 3 Explanation of BPW code numbers

## 3.1 Trailer axles and suspensions (extract)

Example:					
30.	38.	743.	000		
61.	38.	441.	001		
		1st + 2nd digit	Wheel brake		
		Axle execution	Suspension execution	Drum	Disc
20.		Single axle without suspension parts		all	-
20.		Rigid axle, ECO Plus 3, 2015 -		all	all
21.			Single axle with suspension parts	all	-
21.		Rigid axle, solid, ECO Plus 3, 2015 -		all	all
22.			Tandem axle suspension	all	-
22.		Axle stub, ECO Plus 3, 2015 -		all	all
23.			Tri-axle suspension	all	-
23.		Swivel axle, ECO Plus 3, 2015 -		all	all
24.		Single axle without suspension parts		all	all
25.		Single axle without suspension parts		all	all
26.		Steering axle without suspension parts		all	all
27.		Single axle without suspension parts		all	all
28.			Single axle with suspension parts	all	all
29.			Tri-axle suspension	all	-
29.		Steering axle, ECO Plus 3, 2015 -		all	all
30.		Single axle without suspension parts	Single axle with suspension parts	all	-
31.		Single axle without suspension parts		all	-
32.			Tandem or tri-axle suspension	all	-
33.			Tandem-Swivel axle / Tandem or tri-axle suspension	all	-
34.		Swivel axle		all	-
35.		Stub axle		all	-
36.		Steering axle without suspension parts		all	-
38.		Single axle with monted brake cylinders	Single axle with suspension parts without air bags, air bags loose, separately / VB-single axle	all	-
39.			Tri-axle axle air suspension / Tandem or tri-axle suspension	all	Ø 430
61.			Single axle with suspension parts	SN 420	Ø 430
62.			Tandem axle air suspension	SN 420	Ø 430
63.			Tri-axle axle air suspension	SN 420	Ø 430
64.			Single axle with suspension parts	SN 360	Ø 370
65.			Tandem axle air suspension	SN 360	Ø 370
66.			Tri-axle axle air suspension	SN 360	Ø 370
67.			Single axle with suspension parts	SN 300	-
68.			Tandem axle air suspension	SN 300	-
69.			Tri-axle axle air suspension	SN 300	-
70.			Mechanical suspension (VB + W) with ECO Plus 3 unit, 2015 -	all	all
71.			Modul without hanger bracket and air bag (ECO Air COMPACT)	SN 420	Ø 430
74.				SN 360	Ø 370
77.				SN 300	-
72.			Modul with hanger bracket and without air bag (ECO Air COMPACT)	SN 420	Ø 430
75.				SN 360	Ø 370
78.				SN 300	-
73.			Modul with hanger bracket and air bag + Tandem or tri-axle suspension (ECO Air COMPACT)	SN 420	Ø 430
76.				SN 360	Ø 370
79.				SN 300	-
98.			Suspension parts, air suspension parts without axles		
99.			Suspension parts, air suspension parts without axles		

# Explanation of BPW code numbers 3

## Trailer axles and suspensions (extract) 3.1

Example:						
30.	38.	743.	000			
61.	38.	441.	001			
3rd + 4th digit						
		Axle load	Roller bearings	Axle series	Year of manuf.	Remark
06.		6500 kg	33116 / 32310	H.. / K.. / N..	1982 -	Conv. bearing
08.		8000 - 9000 kg	33116 / 32310	H.. / K.. / N..	1982 -	
09.						
10.		10000 - 12000 kg	33118 / 33213	H.. / K.. / N..	1982 -	
14.		13000 - 14000 kg	32219 / 33215	H.. / K.. / N..	ab 1983	
16.		16000 - 18000 kg	32222 / 32314	H..	ab 1983	
20.		20000 kg	32224 / 32316	H..	ab 1983	
36.		6500 kg	33116 / 32310	H.. / K.. / N..	ab 1991 (ab 1992)	ECO / ECO-MAXX Unit
37.		8000 - 9000 kg	33116 / 32310	H.. / K.. / N..	ab 1991 (ab 1992)	
38.						
39.						
40.		10000 - 12000 kg	33118 / 33213	H.. / K.. / N..	ab 1991 (ab 1992)	ECO Plus Unit
41.						
44.		13000 - 14000 kg	32219 / 33215	H..	ab 1994	
46.		6500 kg	33118 / 33213	H..	ab 2003	ECO Plus Unit
48.		8000 - 9000 kg	33118 / 33213	H.. / SH.. / KH.. / SKH.. / NH..	ab 2000	
49.						
50.		10000 - 12000 kg	33118 / 33213	H.. / SH.. / KH.. / SKH.. / NH..	ab 2000	
51.						ECO Plus 2 Unit
56.		6500/7000 kg	33118 / 33213	H.. / NH..	ab 2007	
57.		8000 - 9000 kg	33118 / 33213	H.. / SH.. / KH.. / SKH.. / NH..	ab 2007	
58.						Conv. bearing
59.						
64.		6000 kg	30313 / 32309	EH..	- 1980	Conv. bearing
65.		6400 kg 6500 kg	33215 / 32310 33215 / 32310	KR.. EH..	1985 - 1980 - 1982	
66.		6500 kg	33118 / 33213	ECO Plus 3	2015 -	ECO Plus 3 Unit
68.		9000 kg	33118 / 33213	ECO Plus 3	2015 -	
68.		7250 kg	30315 / 32310	EH..	- 1964	Conv. bearing
69.		8000 kg	30315 / 32310	EH..	- 1967	
71.		10000 kg	30317 / 30314	EH..	- 1967	
72.		12000 kg	33118 / 33213 32219 / 33215 32222 / 32314 32219 / 33215	EH.. 12000-2 EH.. 12000-1 EH.. 12000 ZZ.. 12010-1	1977 - 1982 - 1983 - 1983 - 1983	
73.		13000 / 14000 kg	32219 / 33215	EH.. 14000-1 ZR.. 13000	- 1983 - 1983	
74.		14000 kg	32222 / 32314	EH..	- 1983	
75.		30000 kg	32228 / 32318	M..		
76.		9000 kg	33215 / 32310	EH.. / ZR..	1967 - 1982	
80.		11000 kg	33217 / 33213	EH..	1966 - 1982	
81.		7350 kg	7350 kg	EH..	1964 - 1967	
83.		6000 kg (6300 kg)	33213 / 33209	ZR..	1967 - 1983	
84.		7350 kg	33215 / 32310	EH..	1967 - 1982	
85.		8000 kg	33215 / 32310	EH.. / ZR..	1967 - 1982	
86.		10000 kg	33217 / 33213	EH.. / ZR..	1966 - 1982	
87.		20000 kg	32224 / 32316	EH..	- 1983	
89.		16000 kg	32222 / 32314	EH..	- 1983	

# 3 Explanation of BPW code numbers

## 3.1 Trailer axles and suspensions (extract)

Example:			
30.	38.	743.	000
61.	38.	441.	001
		<b>5th + 6th digit ( Ref. number 7... )</b>	
01.		Designation trailing guide and air bag beam (ECO Air COMPACT)	
02.			
03.			
04.			
05.			
06.			
		<b>5th + 6th digit ( ECO Plus 3 )</b>	
		<b>Wheel brake</b>	<b>Dimensions</b>
00.		without brake	
10.		SN 3015	closed Ø 300 x 150
11.		SN 3020	closed Ø 300 x 200
20.		SN 3620	closed Ø 360 x 200
30.		SN 4212	closed Ø 420 x 120
31.		SN 4218	closed Ø 420 x 180
32.		SN 4220	closed Ø 420 x 200
40.		TSB 3709	Ø 370
41.		TSB 4309	Ø 430
		<b>5th - 7th digit ( Ref. number 2... / 3... / 6... )</b>	
001.	to	<b>Premounted air suspension axle without hanger brackets and air bags</b>	
099.		in the case of ref. number 61.xx.xxx.xxx - 69.xx.xxx.xxx	
		e.g. .0xx. = Premounted air suspension axle	
		.x51. = Premounted air suspension axle with trailing arm 05.082.13.51.0	
220.	to	<b>Designation of ride height and air bag version 220 to 509</b>	
509.		in the case of ref. number 61.xx.xxx.xxx - 69.xx.xxx.xxx	
		e.g. .22x. = 220 mm ride height	
		.44x. = 440 mm ride height	
		<b>Air bag type:</b>	
		.xx0. = BPW 30 (Ø 300 mm)	
		.xx1. = BPW 36 (Ø 360 mm)	
		.xx2. = BPW 36-1 (Ø 360 mm)	
		.xx3. = BPW 30-1 (Ø 300 mm)	
		.xx4. = BPW 30 K (Ø 300 mm)	
		.xx5. = BPW 36 K (Ø 360 mm)	
		.xx6. = BPW 36-2 (Ø 360 mm)	
		.xx9. = BPW 30 / 36 lose separat	
101.	to	<b>Designation of wheel brake in the case of ref. number 20. - 39...</b>	
125.		see pages 13 / 14	
501.	to		
839.			

# Explanation of BPW code numbers **3**

## Trailer axles and suspensions (extract) **3.1**

Example:								
30.	38.	743.	000					
61.	38.	441.	001					
		5th - 7th digit						
		Wheel brake	Dimensions	Execution	Brake lining	Year of manuf.		
101. to 108.		SN 4216	Ø 420 x 160	Alloy brake shoes	18 mm	- 1974		
109. to 116.		SN 4216	Ø 420 x 180	Alloy brake shoes	18 mm	- 1974		
117. to 125.		SN 4216	Ø 420 x 200	Alloy brake shoes	18 mm	- 1974		
500.		SN 3010	closed Ø 300 x 100	Brake shoes with splitted roller (BPW 95)	18 mm	1995 -		
501.		SN 3015	closed Ø 300 x 150		18 mm	1995 -		
502.		SN 3020	closed Ø 300 x 200		18 mm	1995 -		
505.		SN 3015 HWG	open Ø 300 x 150					
511.		SN 3015 KWG	closed Ø 300 x 150	Alloy brake shoes	13 mm 18 mm	1966 - 1973 1973 - 1978		
512.		SN 3015 HWG	closed Ø 300 x 150					
513.		SN 3015 KWG/BA	closed Ø 300 x 150					
518.		SN 3020 KWG	open Ø 300 x 200					
519.		SN 3020 HWG	open Ø 300 x 200					
525.		SN 3020 KWG	closed Ø 300 x 200					
526.		SN 3020 HWG	closed Ø 300 x 200					
532.		SN 5020 HWG	closed Ø 500 x 200				18 mm	
542.		SN 3616	closed Ø 360 x 160		Quick-release brake shoes wedge plates		18 mm	1985 -
545.		SN 3620 KWG	closed Ø 360 x 200					
546.		SN 3620 HWG	closed Ø 360 x 200					
551.		SN 3616 BPW 95	closed Ø 360 x 160	Brake shoes with splitted roller	18 mm	1995 -		
552.		SN 3620 BPW 95	closed Ø 360 x 200		18 mm	1995 -		
581.		SN 3015-1 KWG	closed Ø 300 x 150	Brake shoes with closed anchor eye	18 mm	1978 - 1989		
582.		SN 3015-1 HWG	closed Ø 300 x 150					
583.		SN 3015-1 KWG/BA	closed Ø 300 x 150					
584.		SN 3015-1 HWG/BA	closed Ø 300 x 150					
585.		SN 3020-1 KWG	closed Ø 300 x 200					
586.		SN 3020-1 HWG	closed Ø 300 x 200					
587.		SN 3020-1 HWG/BA	closed Ø 300 x 200					
588.		SN 3020-1 KWG	open Ø 300 x 200					
589.		SN 3020-1 HWG	open Ø 300 x 200					
592.		SN 3015 HWG	closed Ø 300 x 150	Quick-release brake shoes	18 mm	1990 -		
596.		SN 3020 HWG	closed Ø 300 x 200					
609.		SB 4345	Ø 430	Disc brake		1996 - 2003		
610.		SB 3745	Ø 370					
612.		SB 3745	Ø 370					
613.		SB 4309	Ø 430					
614.		SB 4345	Ø 430					
616.		TSB 3709	Ø 370	BPW ECO Disc		2010 -		
617.		TSB 4309	Ø 430					
618.		TSB 4312	Ø 430					

Definition			
<b>SN</b>	S-cam shaft	<b>HWG</b>	half-size brake camshaft
<b>SB</b>	Disc brake	<b>KWG</b>	short brake camshaft
<b>TSB</b>	BPW ECO Disc Trailer Disc brake	<b>BA</b>	with brake equalization

## 3 Explanation of BPW code numbers

### 3.1 Trailer axles and suspensions (extract)

Example:			
30.	38.	743.	000
61.	38.	441.	001
<b>5th - 7th digit</b>			
		<b>Wheel brake</b>	<b>Dimensions</b>
		<b>Execution</b>	<b>Brake lining</b>
			<b>Year of manuf.</b>
709.		SN 4218-2 KWG open	Ø 420 x 180
710.		SN 4218-2 HWG open	Ø 420 x 180
713.		SN 4218-2 KWG closed	Ø 420 x 180
714.		SN 4218-2 HWG closed	Ø 420 x 180
717.		SN 4220-2 HWG open	Ø 420 x 200
718.		SN 4220-2 HWG open	Ø 420 x 200
722.		SN 4220-2 KWG closed	Ø 420 x 200
723.		SN 4220-2 HWG closed	Ø 420 x 200
739.		SN 4222-2 HWG closed	Ø 420 x 220
741.		SN 4212 closed	Ø 420 x 120
742.		SN 4216 closed	Ø 420 x 160
743.		SN 4218 closed	Ø 420 x 180
744.		SN 4220 closed	Ø 420 x 200
745.		SN 4222 closed	Ø 420 x 220
790.		SN 4212-2 HWG open	Ø 420 x 120
792.		SN 4212-2 HWG/BA open	Ø 420 x 120
793.		SN 4212-2 KWG closed	Ø 420 x 120
794.		SN 4212-2 HWG closed	Ø 420 x 120
796.		SN 4212-2 HWG/BA closed	Ø 420 x 120
802.		SN 4216-1 HWG open	Ø 420 x 160
806.		SN 4216-1 HWG closed	Ø 420 x 160
809.		SN 4218-1 KWG open	Ø 420 x 180
810.		SN 4218-1 HWG open	Ø 420 x 180
813.		SN 4218-1 KWG closed	Ø 420 x 180
814.		SN 4218-1 HWG closed	Ø 420 x 180
817.		SN 4220-1 KWG open	Ø 420 x 200
818.		SN 4220-1 HWG open	Ø 420 x 200
822.		SN 4220-1 KWG closed	Ø 420 x 200
823.		SN 4220-1 HWG closed	Ø 420 x 200
839.		SN 4222-1 HWG closed	Ø 420 x 220
889.		SN 4212-1 KWG open	Ø 420 x 120
890.		SN 4212-1 HWG open	Ø 420 x 120
893.		SN 4212-1 KWG closed	Ø 420 x 120
894.		SN 4212-1 HWG closed	Ø 420 x 120
896.		SN 4212-1 HWG/BA closed	Ø 420 x 120
<b>7th - 10th digit ( Ref. number 7... + ECO Plus 3)</b>			
0000 to 9999	Consecutive number 0000 - 9999		
<b>8th - 10th digit</b>			
000 to 999	Consecutive number 000 - 999		

Definition			
<b>SN</b>	S-cam shaft	<b>HWG</b>	half-size brake camshaft
<b>SB</b>	Disc brake	<b>KWG</b>	short brake camshaft
<b>TSB</b>	BPW ECO Disc Trailer Disc brake	<b>BA</b>	with brake equalization

