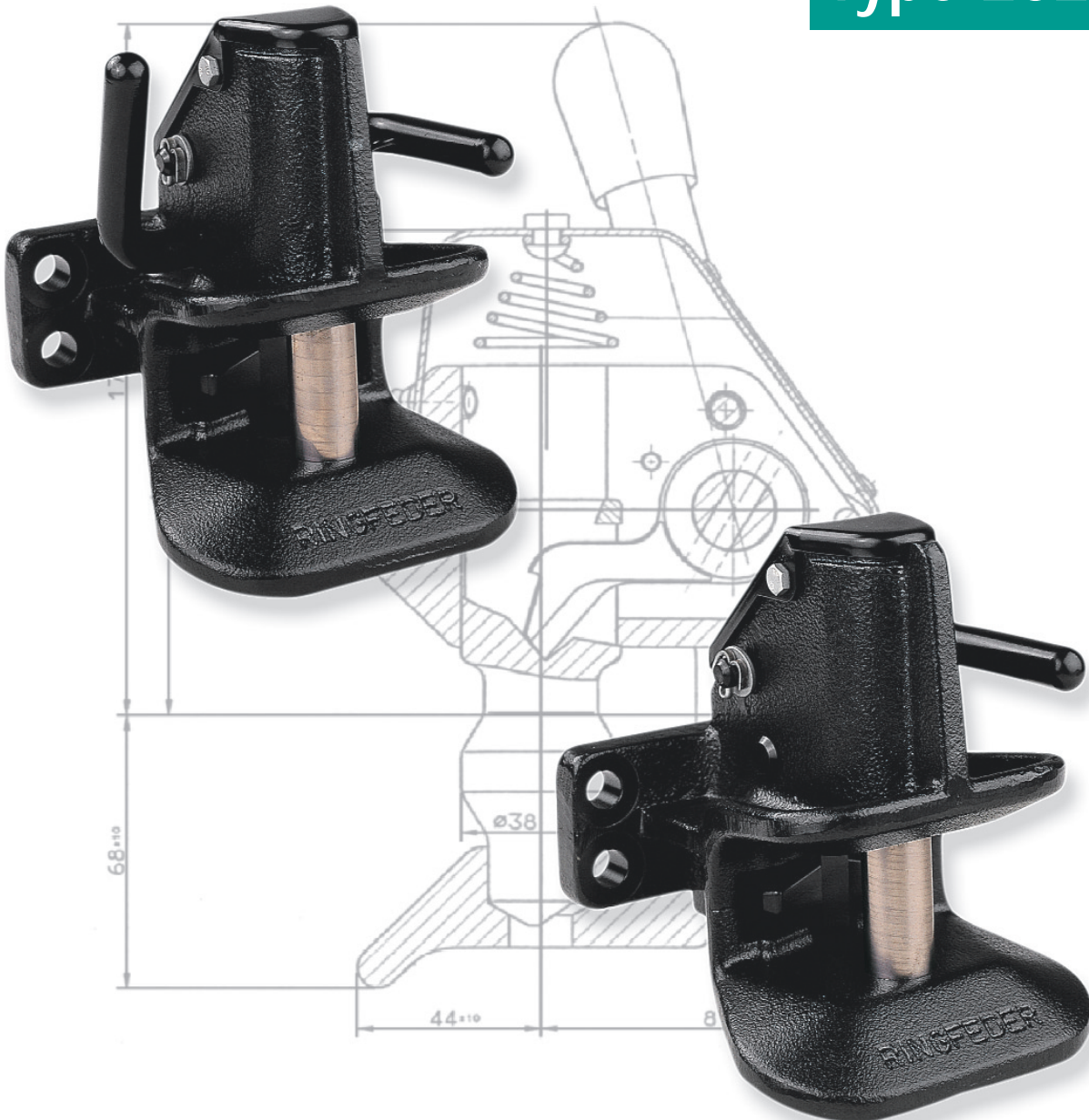


# RINGFEDER

## Automatic Trailer Coupling

suitable for drawbar eye in accordance with DIN 8454

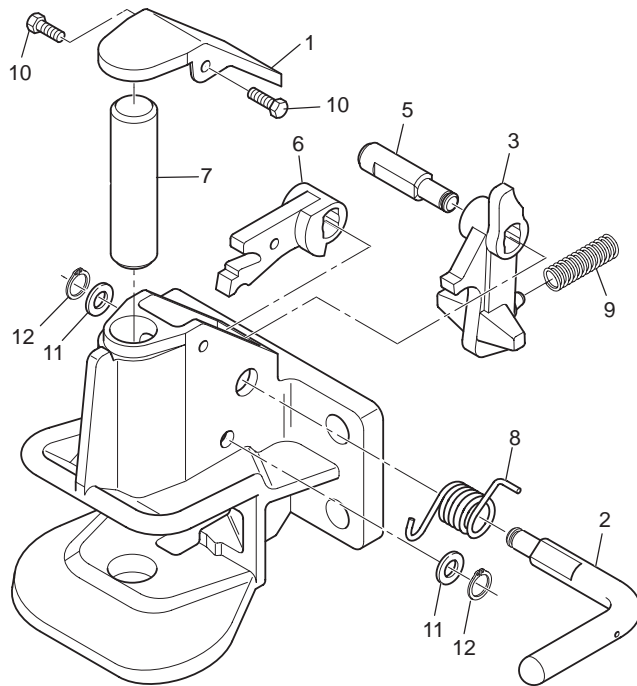
Type 2025



# Automatic Trailer Couplings

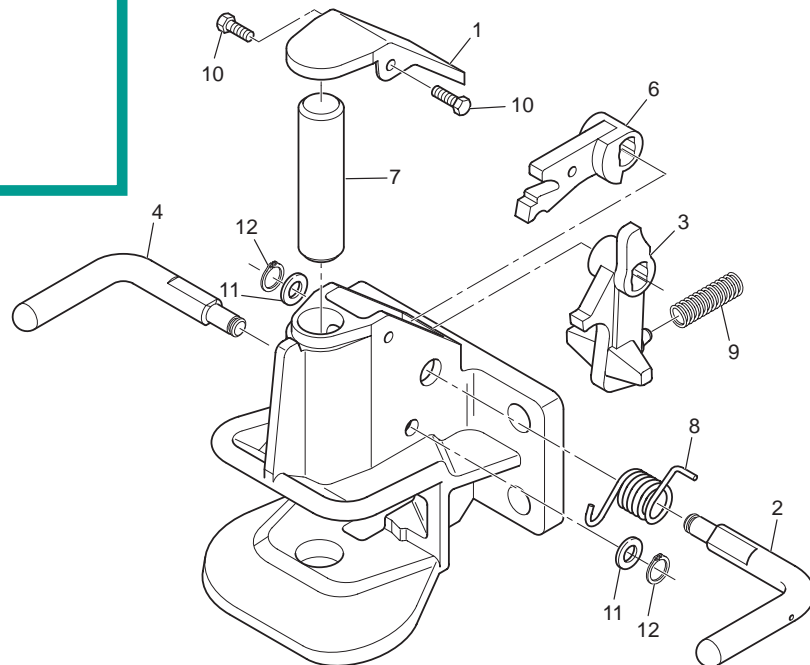
## Type 2025 model oA

without release handle



## Type 2025 model mA

with release handle



## Installation and operating instructions for RINGFEDER automatic trailer coupling type 2025

### Type 2025 oA without release lever

Item	Order No.	Description	Qty.
1	14994845	End cap incl. 2 pcs. item 10	1
2	14994853	Hand lever incl. items 6, 8, 11 and 12	1
3		Release latch	1
5	14994561	Pin incl. items 3, 9, 11 and 12	1
6		Locking lever	1
7	14 994 569	Coupling bolt	1
8		Locking spring	1
9		Compression spring	1
10		Hexagonal screw M6 x 10 DIN 933-8.8	2
11		Washer DIN 126-11 x 21	2
12		Retaining ring DIN 471-11x1	2

### Type 2025 mA incl. release lever

Item	Order No.	Description	Qty.
1	14 994 845	End cap incl. 2 pcs. item 10	1
2	14 994 853	Hand lever incl. items 6, 8, 11 and 12	1
3		Release latch	1
4	14 994 553	Release handle incl. items 3, 9, 11 and 12	1
6		Locking lever	1
7	14 994 569	Coupling bolt	1
8		Locking spring	1
9		Compression spring	1
10		Hexagonal screw M6 x 10 DIN 933-8.8	2
11		Washer DIN 126-11 x 21	2
12		Retaining ring DIN 471-11 x 1	2

the additional release handle fitted at the opposite end of the hand lever (for designs equipped with release handle). For models without release handle the coupling is closed by pushing a bar against the release latch fitted in the coupling body.

**Caution. Danger:** In no case should the release latch in the coupling body be operated by hand to close the coupling. - **Danger of accident.**

### Important Instruction:

When fitting (or replacing) the trailer coupling please attend to the relevant statutory regulations and particular information from the vehicle manufacturers.

### EEC Type Approval:

The fitting of the trailer coupling is to be viewed in accordance with the regulations defined in supplement I, no. 5.10 following the requirements laid down in supplement VII of the EU directive 94/20 EC.

### Maintenance:

The movable parts of the coupling will be subject to less wear when they are always kept well lubricated. In particular after cleaning with high-pressure washers the movable parts of the coupling have to be lubricated. For this purpose remove the end cap and open the coupling. The fitting of the trailer coupling is to be viewed in accordance with the regulations defined in supplement I, no. 5.10 following the requirements laid down in supplement VII of the EU directive 94/20 EC.

### Application and Operation:

Trailer drawbar eyes according to DIN 8454 (also used for public road traffic). Minimum articulation of the drawbar eye to DIN 8454:

horizontally: +/- 105°,  
vertically +/- 20°,  
rotationally +/- 25°.

In addition, also drawbar eyes according to DIN 74054 and to ISO 8755 may be connected for switching purposes only, such towing devices, however, are **not** allowed to public road traffic because of the too small pivoting angle of these drawbar eyes.

drawbar eye of the trailer pushes against the release latch fitted on the rear end of the coupling body. Thus the coupling mechanism is released, the coupling bolt slips through the drawbar eye in its lowest end position in the coupling body and is automatically secured by the locking lever. Check that after each coupling process the coupling bolt and hand lever are in their lowest end positions (hand lever must be in horizontal position). Otherwise the whole coupling procedure must be repeated.

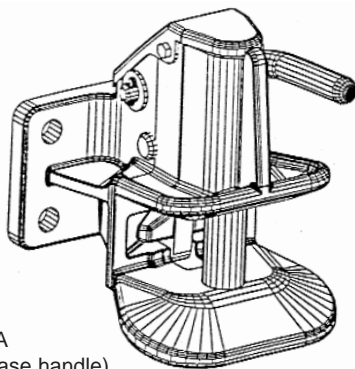
### Uncoupling:

To disengage the coupling push hand lever upwards and disconnect the vehicles. The coupling is set ready for its next engagement. If no further coupling procedure shall be done the coupling has to be set in its closed position. For this purpose operate by hand

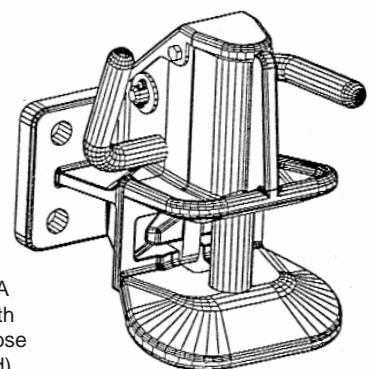
### Coupling:

To make the coupling push hand lever upwards and back up the towing vehicle. The

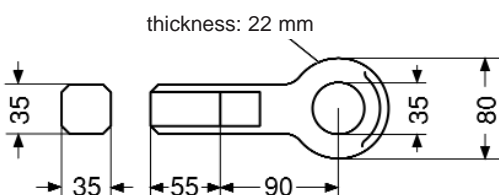
### Technical Data:



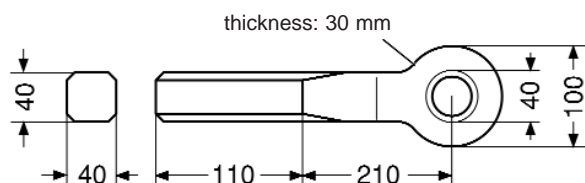
Type 2025 model oA  
(design without release handle)



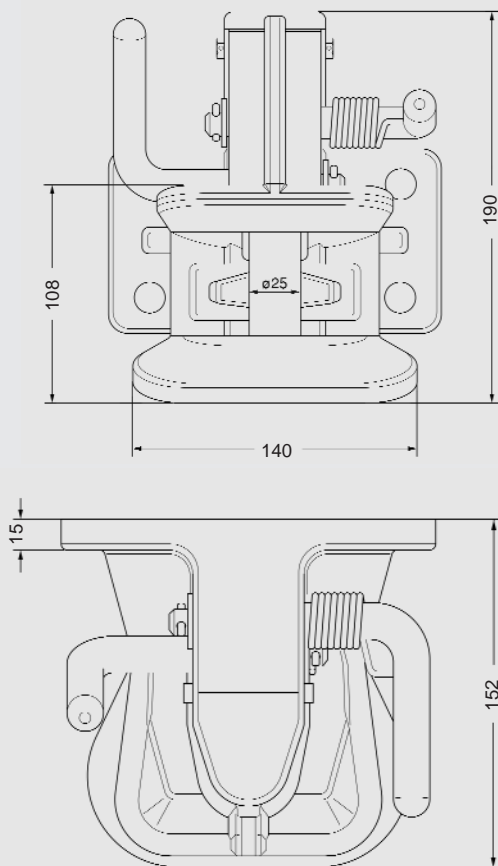
Type 2025 model mA  
(design equipped with  
release handle to close  
the coupling by hand)



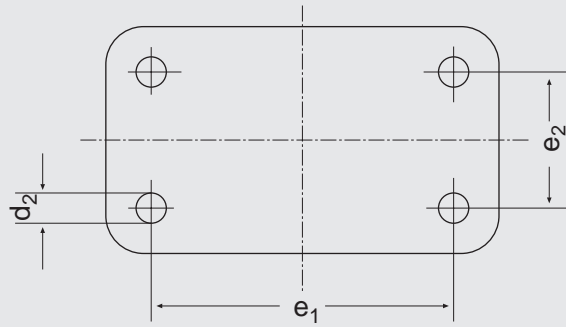
Drawbar eye to DIN 8454  
vertical articulation of the drawbar eye to DIN 8454:  
approx +/- 30°



Drawbar eye to DIN 74054  
vertical articulation of the 40 mm drawbar eye to  
DIN 74054 and of the 40 mm drawbar eye to  
ISO 8755: +/- 20°



### Flange Design



### Articulation of the drawbar eye to DIN 8454:

- horizontally  $\pm 105^\circ$
- vertically  $\pm 30^\circ$
- rotationally  $\pm 30^\circ$

### Technical Data:

Type	Flange Design e1 x e2	d <sub>2</sub>	Design	EEC Type Approval	Tightening Torque Nm	D-Value kN	Fastening Screws quality 8.8	Order No.
2025	130 x 30	Ø 13	oA	e1 00-1058	86	41	M 12	14 994 781
2025	130 x 30	Ø 13	mA	e1 00-1058	86	41	M 12	14 994 878
2025	120 x 55	Ø 15	oA	e1 00-1058	135	41	M 14	14 994 773
2025	120 x 55	Ø 15	mA	e1 00-1058	135	41	M 14	14 994 789

Suitable to connect up to 5 trailers of a total weight 4000 kg each using drawbar eyes to DIN 8454.



A certified company in accordance with DIN EN ISO 9001 and VDA 6.1

RINGFEDER VBG GMBH · Oberschlesienstr. 15 · D-47807 Krefeld · P.O. Box 130619 · D-47758 Krefeld  
 Phone +49 (0) 2151 835-0 · Fax +49 (0) 2151 835-200/207 · <http://www.ringfeder.de>  
 e-mail: [zentrale@ringfeder.de](mailto:zentrale@ringfeder.de)