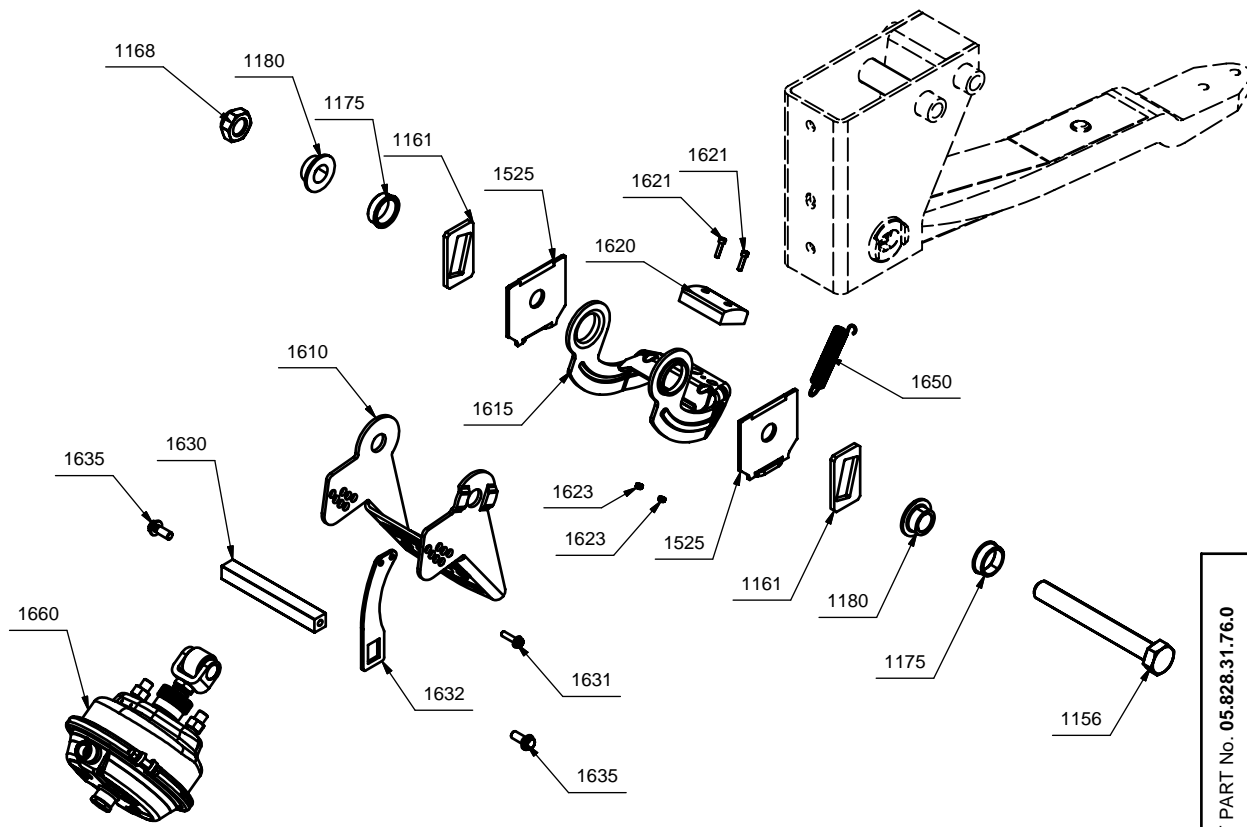


PIVOT HANGER

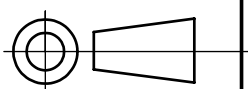
refer suspension axle lift drawing for details

SUSPENSION SPRING

refer suspension axle lift drawing for details



Parts List				
ITEM	QTY	PART NUMBER	DESCRIPTION	
1156	2	0334015390	SPRING EYE BOLT - M30x255	
1168	2	0326015010	LOCK NUT M30	
1175	4	0311304110	BUSH	
1180	4	0311301370	BUSH	
1610	1	0318915360	SUPPORT - RIGHT HAND SIDE	
1611	1	0318915370	SUPPORT - LEFT HAND SIDE	
1615	2	0519044140	LEVER	
1620	2	0235060600	BUMP STOP	
1621	4	0250150480	CYLINDER CAP SCREW - M6	
1623	4	0252200782	LOCK-NUT M6	
1630	2	0344101190	LOCKING BAR	
1631	2	0250713700	SCREW - M8x45	
1632	2	0328536070	LOCKING PLATE	
1635	4	0250715311	LOCKING SCREW - M12x30	
1650	2	0339726070	RETURN SPRING	
1660	2	0544410380	BOOSTER - TYPE44	
Items To Be Picked - (SE06 - Spring Eye Assembly. Dual Sided, Alignable Hangers)				
ITEM	QTY	PART NUMBER	DESCRIPTION	
1161	4	0328154180	SHAPED PLATE	
1525	4	0316435010	ALIGNING PLATE	



UNLESS OTHERWISE STATED ALL DIMENSIONS IN MILLIMETRES.
UNLESS OTHERWISE STATED ALL TOLERANCES ARE PER:
BPW WN-1.043 & BPW WN-1.047
AVAILABLE UPON REQUEST FROM BPW TRANSPREC PTY LTD.

Transpec PTY LTD
 1 CHERRY LANE
 LAVERTON NORTH, VIC. 3026
 PHONE: (03) 9267 2444
 FAX: (03) 9369 4826
 www.bpwtranspec.com.au
 ABN 76 000 166 923

THIS DRAWING IS COPYRIGHT AND IS THE SOLE PROPERTY OF TRANSPREC LIMITED, AND MUST NOT BE COPIED OR LOANED WITHOUT WRITTEN PERMISSION AND MUST BE RETURNED UPON REQUEST

DRAWN	P.O'MALLEY	APPR'D	
DATE	28-02-2006	SCALE	NTS

TITLE
BPW AXLE LIFT KIT
 HEAVY DUTY DOUBLE SIDED AXLE LIFT
 TO SUIT SUSPENSIONS
 WITH ALIGNABLE HANGERS
 AND 100mm WIDE TRAILING ARMS

DRAWING No.	AL-04KIT	REV	
-------------	-----------------	-----	--